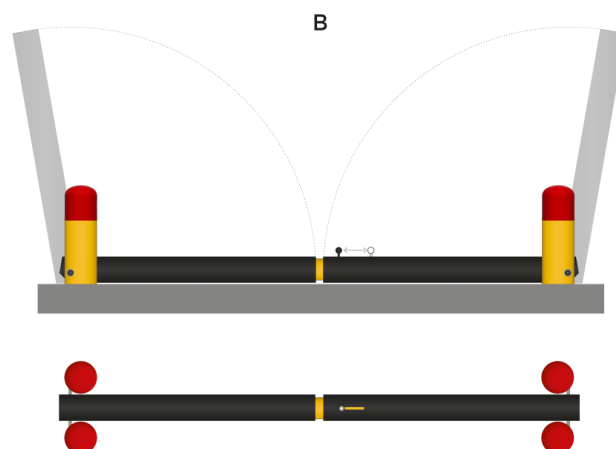
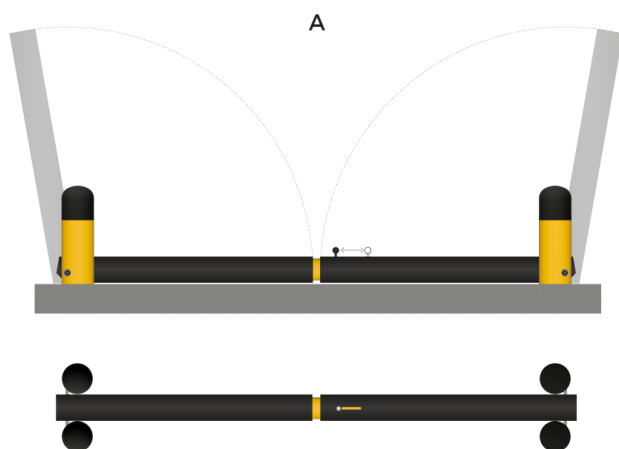


# DOCK LIFTING BARRIERS



## Bollards

Diameter D - mm	Height H - mm	Resistance Joules	Anchoring Pullout kN	Total Floor Space mm	IP Grade	Flame Extinguishing Rate
120	450	16 850	580	317	59	UL94: HB
140	450	23 950	580	265	59	UL94: HB

## Lifting Guards

Diameter D - mm	Length L - mm	Resistance Joules	IP Grade	Flame Extinguishing Rate
125	2000-6000	23 250	59	UL94: HB

Customized solution and colours upon request

### FLEXAFE™

Cutting-Edge Polymer material, designed specifically to absorb high-level impacts in a very small space. It is food-safe, doesn't break or flake, and 100% recyclable.



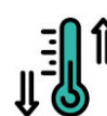
FOOD SAFE



Resistance to Ultra-Violet Light DIN-EN-ISO 8777-8 Blue Scale



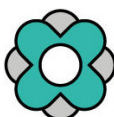
100% recyclable



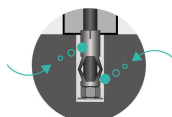
Temperature Range -40° to +50°

### ROOTLOCK®

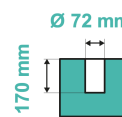
World's most advanced and safe Anchorage System. It helps the floor to absorb violent and repeat vehicles impacts without damaging the floor.



Cutting-edge Anchorage System Design



Anti-Shrinkage Cement



Anchor hole of the impact bollards

**CONTACT FOR CUSTOMER SOLUTIONS:** T +39 347 46 74 056 | T +420 607 120 638 | E [info@bambarrier.com](mailto:info@bambarrier.com) | [www.bambarrier.com](http://www.bambarrier.com)

# DOCK LIFTING BARRIERS

